



MEMORANDUM

November 9, 2022

Mountainland Technical College – Architectural Programming

Board Policy R701, *Capital Facilities*, requires the Board to approve architectural programming services for a future state-funded capital development project that has not been approved by the State Legislature. Mountainland Technical College (MTech) requests Board authorization to proceed with the programming for the Wasatch Campus, the College's FY 2023 capital development request, and is the #1 ranked capital development project for the Technical Colleges.

This architectural programming is a necessary step to move forward with the building planning for the Heber Valley/Wasatch Campus. Mountainland Technical College will use the programming to guide the final development of the Heber Valley/Wasatch Campus.

The Mountainland Technical College's Board of Trustees, on October 19, 2022, approved unanimously to proceed with the architectural programming for the Heber Valley/Wasatch Campus.

Commissioner's Recommendations

The Commissioner recommends the Committee authorize Mountainland Technical College to proceed with programming for the Wasatch Campus and move to the full Board for final approval.

Attachments



October 19, 2022

Mr. David Woolstenhulme
Commissioner
Utah System of Higher Education, Two Gateway
60 South 400 West
Salt Lake City, Utah 84101-1284

Dear Commissioner Woolstenhulme:

The Mountainland Technical College hereby requests approval to proceed with Architectural Programming for the Heber Valley campus.

This Architectural Programming is a necessary step to move forward with the building planning for the Heber Valley Campus. Mountainland Technical College will use the programming to guide the final development of the Heber Valley Campus.

The Mountainland Technical College Board of Trustees approved this request on October 19, 2022.

Accordingly, I would appreciate the opportunity to present this Architectural Programming request to the Finance and Facilities Committee at your earliest convenience.

Thanks for your consideration and support.

Sincerely,

Kirt Michaelis
Vice President, Administrative Services



MOUNTAINLAND
TECHNICAL COLLEGE

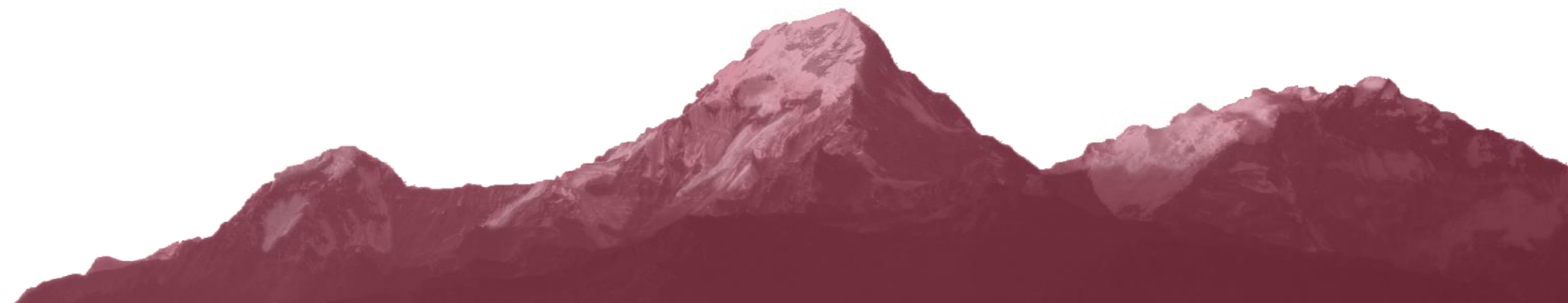
Utah Board of Higher Education

Clay Christensen, President
September 15, 2022

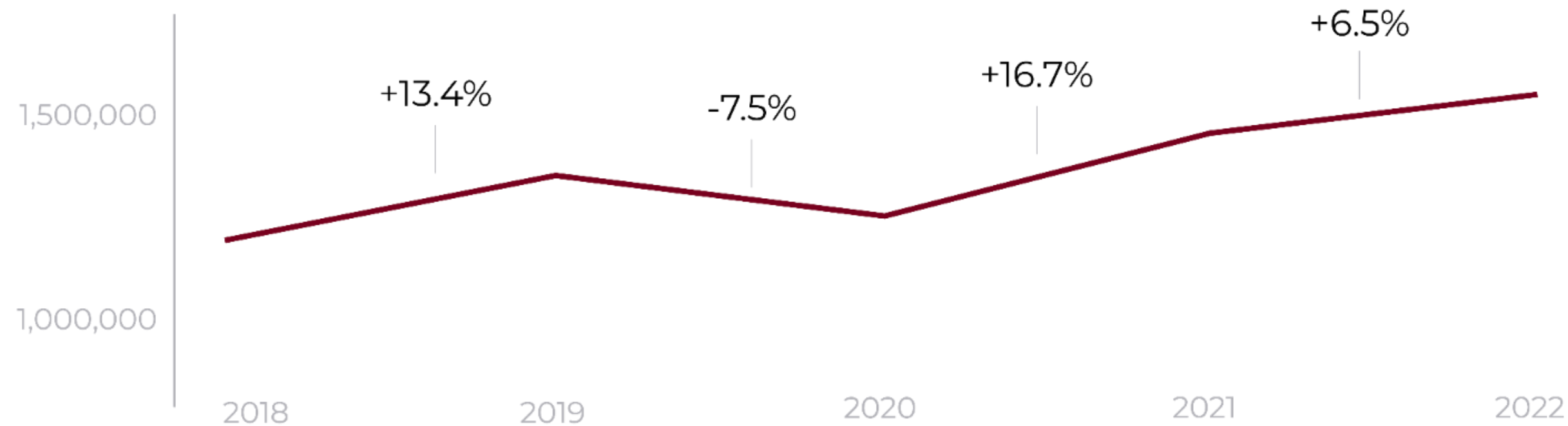
THE CHARGE

To prepare the workforce in the three county service region and implement the Mission Statement of the Mountainland Technical College through the five core areas of: Program Development; Student Achievement; Faculty and Staff Support; Physical Resources; and Community Outreach.

- Mountainland Technical College, Official Vision Statement



MTECH ENROLLMENT GROWTH



TOTAL MEMBERSHIP HOURS:

2019: 1,338,093

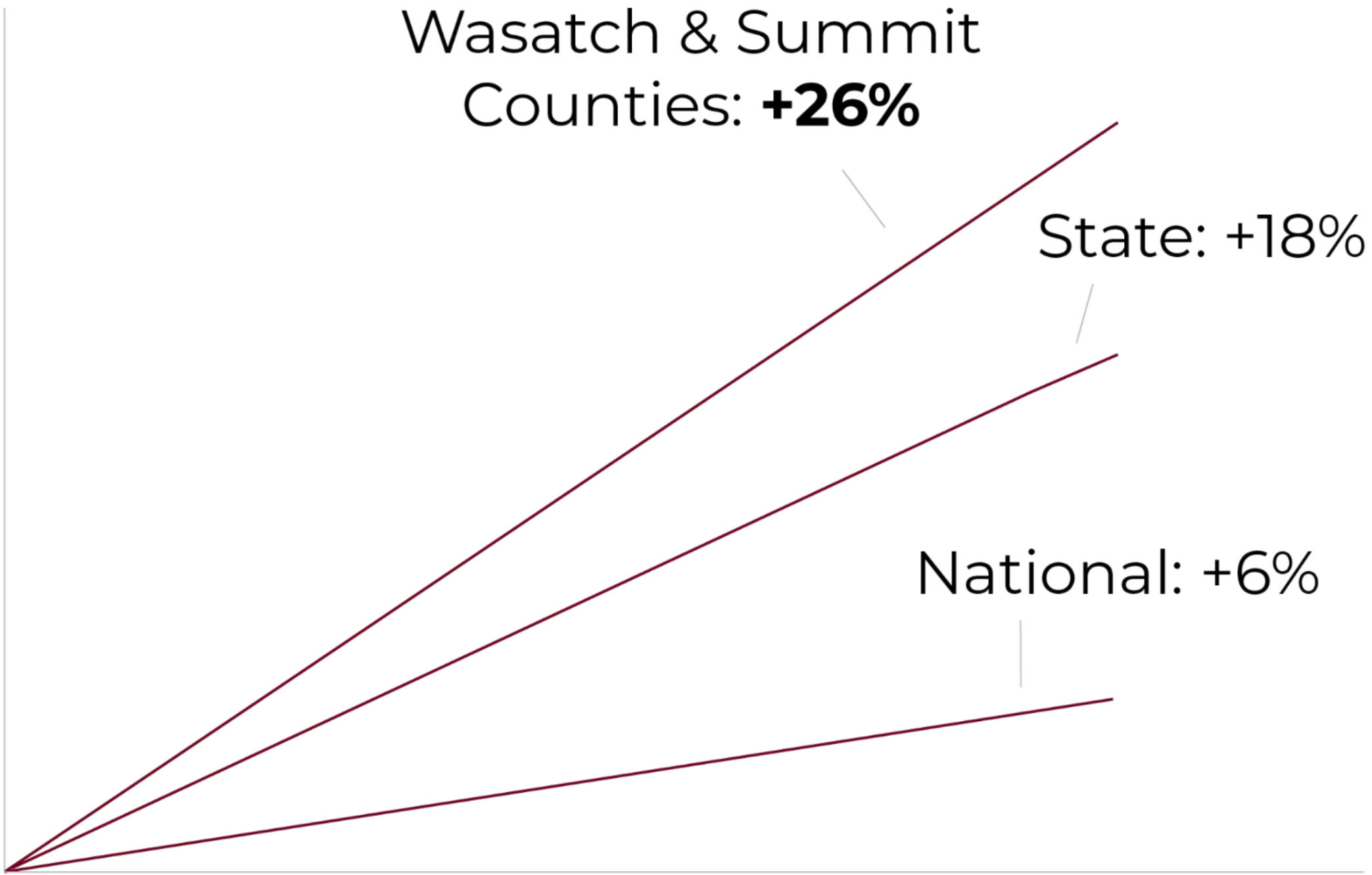
2020: 1,246,774

2021: 1,454,420

2022: 1,548,651

Membership hours have grown by **36.09%** (473,711) since 2016.

WASATCH & SUMMIT ARE GROWING



Projected 10 Year Population Growth



WASATCH-SUMMIT WORKFORCE NEEDS

4,905 Wasatch-Area Jobs Currently Unfilled in MTECH Program Areas*

*“Over the next 5 years, employment in the Wasatch-Summit region is projected to expand by 4,897 jobs”**

	Wasatch: 10-Year Growth	Summit: 10-year growth
Information Technology	39.2%	17.2%
Health Services	44.7%	19.8%
Manufacturing	33.5%	5.1%
Transportation	45.8%	22.9%
Culinary & Accommodation	54.0%	30.8%
Construction	34.9%	9.1%

** Sources: July 2022:
JobsEQ: <http://www.chmuraecon.com/jobseq>*



CURRENT WASATCH FACILITIES

- Current space at Wasatch high school doesn't support adult enrollment.
- No additional capacity for expansion of programs.
- Confusing program structure between various temporary facilities, spread across Wasatch County.

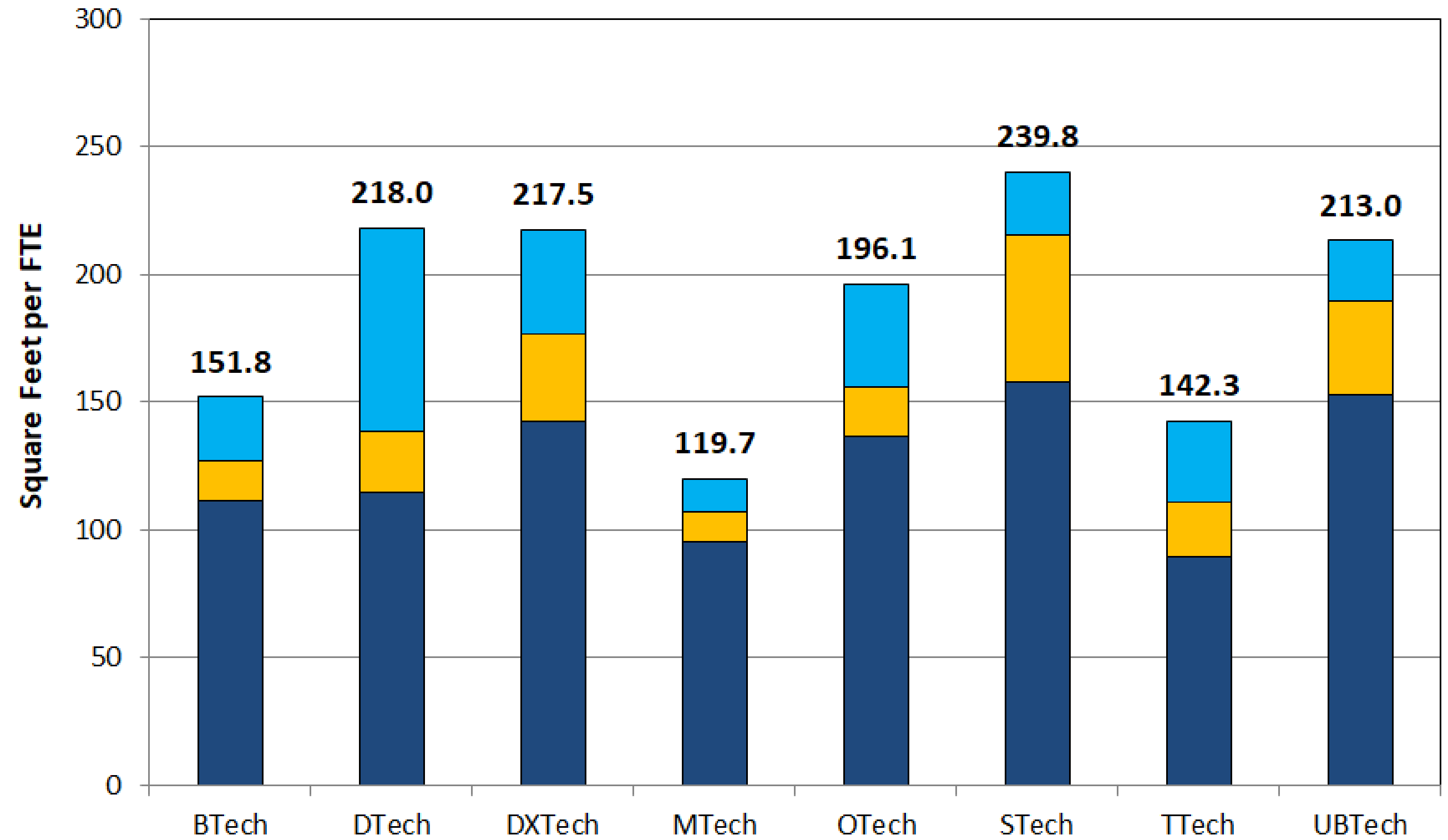


Wasatch High School, West

Maximizing Available Space



Tech College Total Square Feet per FTE Student - FY 2021-22



Fall 2021 Inventory; FY 2021-22 FTE

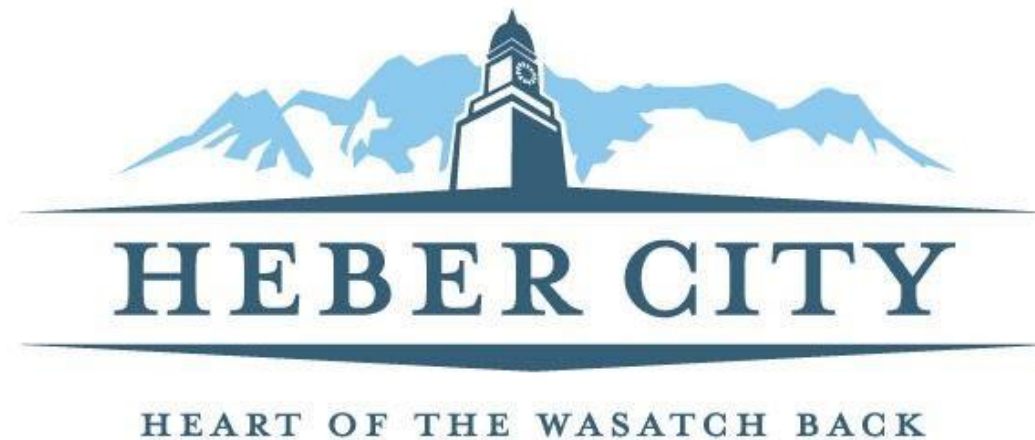
Dark Blue: Classrooms & Labs; Yellow: Office & Conference; Light Blue: Special Use & General Support

MOUNTAINLAND TECHNICAL COLLEGE

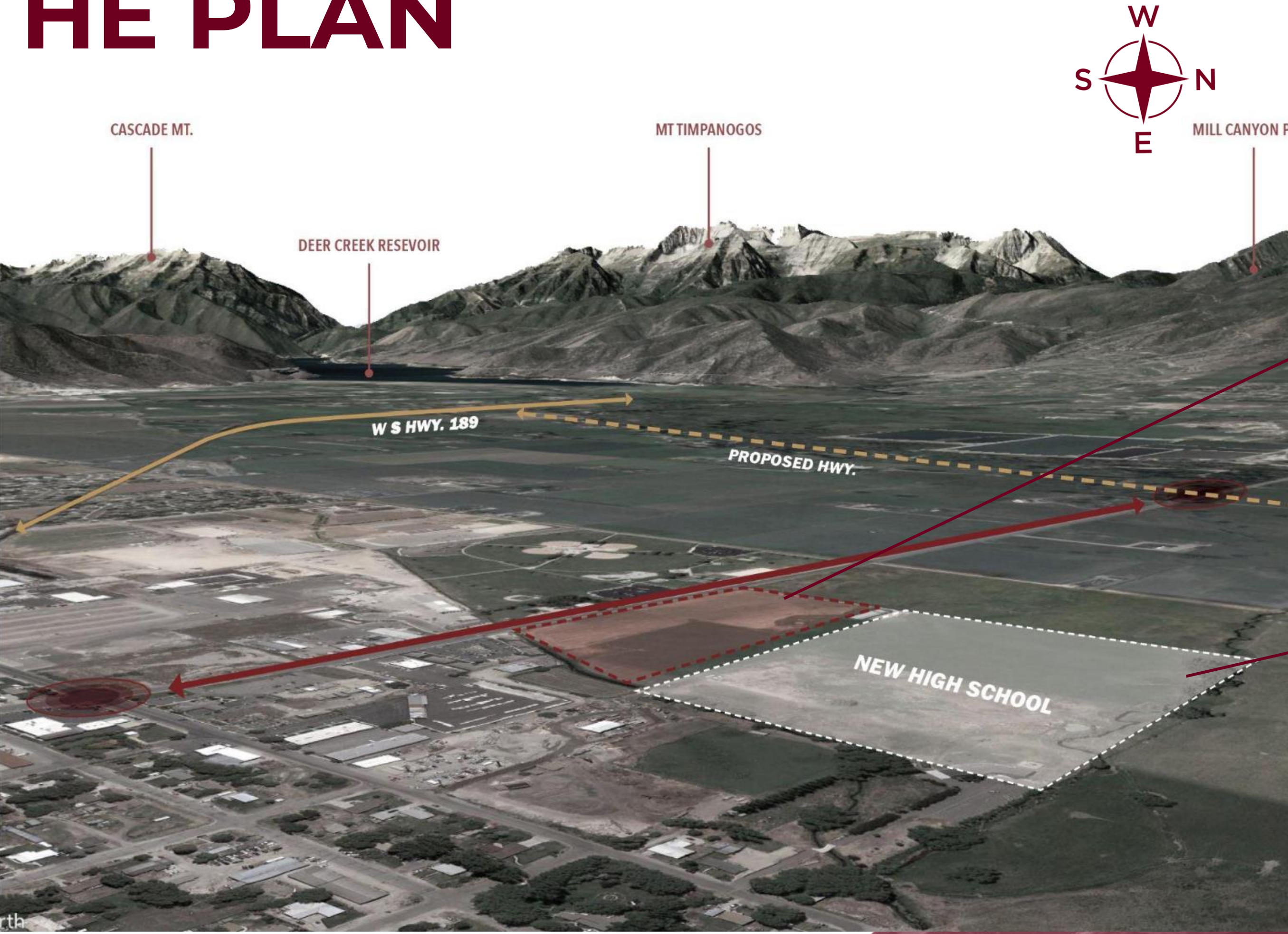
WASATCH, UTAH



A COLLABORATIVE EFFORT



THE PLAN



**MTECH FACILITY
10.75 ACRES**

*Located at approximately
100 S & 900 W*

NEW HIGH SCHOOL

MTECH- WASATCH



- > **675 students ready to go in first cohort**
- > **Comprehensive Campus:**
 - Technology
 - Trades
 - Healthcare
 - Service
 - Apprenticeship
- > **\$129 M into the Utah economy- every year**

ECONOMIC IMPACT OF MTECH GRADUATES

2022 Wasatch/Summit Graduates:	302
Annual Economic Impact:	\$57,716,000
Projected Graduates, Year One:	675
Projected Annual Impact:	\$129,000,000



MTECH, WASATCH: PILLAR CONNECTIONS

ACCESSIBILITY

- > Centralizes services in an underserved, rural community
- > Expands access for underserved adults
- > Addresses regional workforce training capacity challenges

WORKFORCE ALIGNMENT

- > 4,905 current openings in Mountainland's program areas
- > Double digit growth projections across all employment sectors
- > Robust relationships with business and industry

AFFORDABILITY

- > Land Donation of 2.5 acres
- > Economical, program-focused construction
- > Affordable, high-quality technical education
- > 99.2% of MTECH graduates have ZERO education debt

COMPLETION

- > MTECH carries an 83% completion rate going into 2023
- > 675 Graduates Expected in Year One, generating \$129 Million into local economy

LAND ACQUISITION



Total Land: 10.75 Acres

Donated Acreage: 2.5 Acres
(\$914,000)

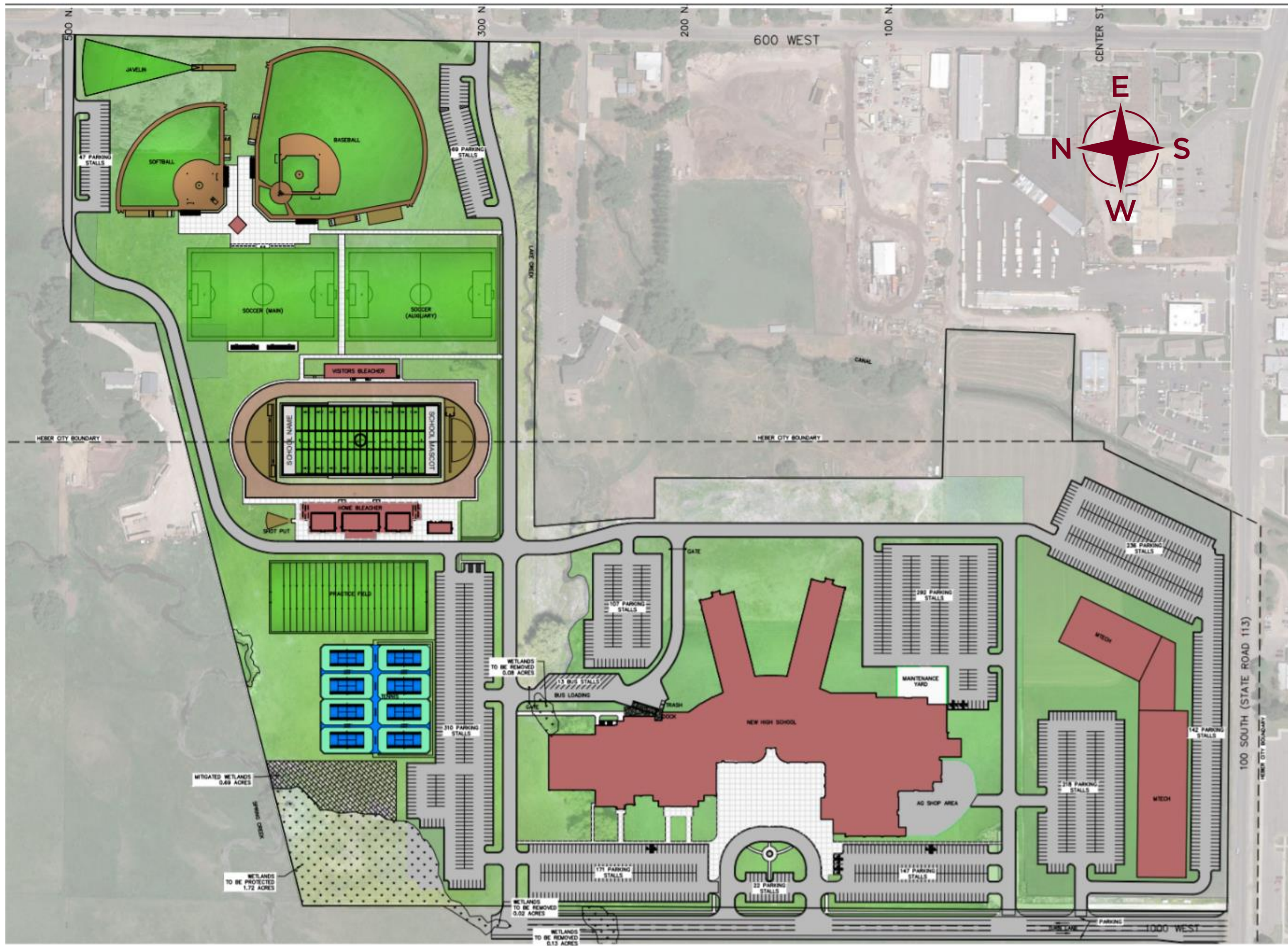
Proposed Purchase: 8.25 Acres
(\$3,000,000)

Located at approximately 100 S & 900 W

MTECH WASATCH

RESPONDING TO THE SITE, THE BUILDING IS POSITIONED TO PROVIDE A FRONT FACE FROM THE EAST WHERE MOST PEOPLE WILL APPROACH FROM HEBER CITY. 2 STORY TRADES WING, AND 3 STORY HEALTH/COMP WING.





PARKING	NEW SCHOOL	MHS
BUS	13	12
PARKING	1155	874
MTECH	596	---

SPORTS FACILITIES NOTE:
 THIS SCHOOL HAS THE SAME SPORTS FACILITIES AS THE CURRENT WASATCH HIGH SCHOOL EXCEPT THAT THIS PLAN HAS 8 TENNIS COURTS WHICH ALLOWS TO HOST LARGER TOURNAMENTS INSTEAD OF 6 COURTS.



MITIGATED WETLANDS
 0.69 AC
 (3X REMOVED WETLANDS)

WETLANDS PER REPORT
 MAY 2020
 0.23 AC (TO BE REMOVED)
 1.72 AC (TO BE PRESERVED)

THIS DOCUMENT IS INCOMPLETE
 AND IS RELEASED TEMPORARILY
 FOR INTERIM REVIEW ONLY. IT IS
 NOT INTENDED FOR CONSTRUCTION
 BIDDING, OR PERMIT PURPOSES.
 PAUL D. BORG P.E.
 SERIAL NO. 285595
 DATE: 25 JULY 2022



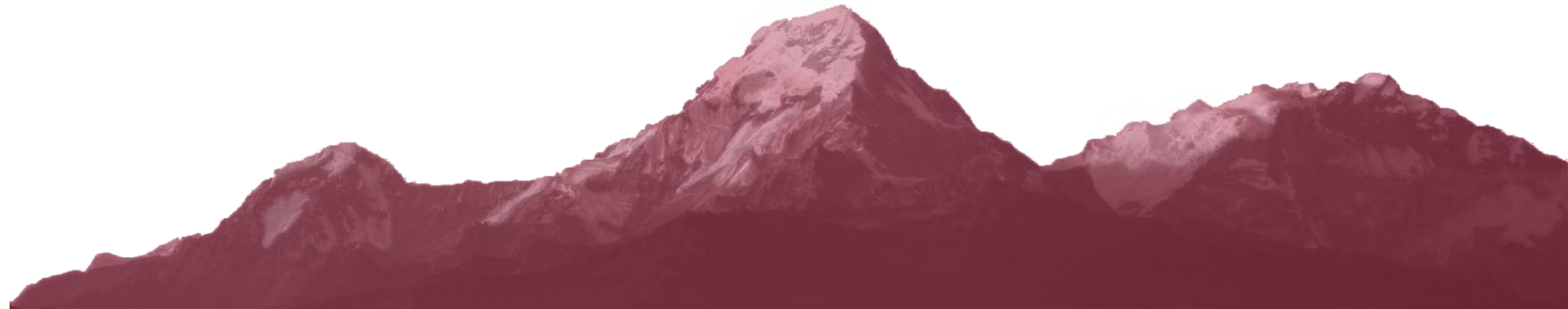
SCALE: 1"=100'

Wasatch County School District
NEW HIGH SCHOOL
 NEW HIGH SCHOOL WITH MTEC
 CONCEPT PLAN



DESIGN BY: PDB DATE: 25 JUL 2022
 DRAWN BY: DEJ REV: _____

SUPERINTENDENT PAUL SWEAT



CAPITAL DEVELOPMENT REQUEST

TOTAL PROJECT SPACE:	101,647 sq. ft.
DFCM CAPITAL BUDGET ESTIMATE:	\$66,651,402.97
<i>2.5-Acre Land Donation</i>	<i>(\$914,000.00)</i>
FY2023 REQUESTED FUNDING:	\$65,737,402.97





MOUNTAINLAND
TECHNICAL COLLEGE

